

产品特点 Features

- ◇ 采用双级滤波电路, 兼顾对共/差模干扰的抑制, 具有优良滤波性能。

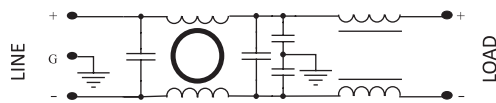
Excellent performance in interference suppressing, two-stage filter circuit.

应用范围 Applications

适用于直流电源(三线)供电的一般场合, 如: DC\DC电源模块、DC\AC逆变电源、测量仪表、车载设备等。

Applied in common DC power supply devices, such as DC\DC power module, DC\AC module, mobile units, test instruments and so on.

电路原理图 Circuit Schematics



RoHS

技术参数 Specifications

型号 Model	端接方式 Terminals	额定电流 Rated Current	额定电压 Rated Voltage	工作频率 Frequency	测试电压 Test Voltage	最大漏电流 Leakage Current	气候类别 Climate	外形尺寸 Dimensions
D3FW-1A / 3A / 6A	!	1A / 3A / 6A	200VDC	DC	线-线 L-N 400VDC/1min 线-地 L-G 500VDC/1min	—	25/085/21	Fig1
D3HB-6A/10A	≡	6A/10A						Fig2
D3LB-20A	≡	20A						Fig3
D3MB-30A	≡	30A						Fig4

插入损耗 Insertion Loss

(按CISPR17在50/50Ω条件下测试)

(Measured in 50Ω system, as CISPR 17)

型号 Model	CM 共模 (dB) / 频率MHz								DM 差模 (dB) / 频率MHz							
	.01	.15	.50	1.0	5.0	10	30	.01	.15	.50	1.0	5.0	10	30		
D3FW-1A	14	43	63	72	60	54	44	11	51	73	49	67	62	53		
D3FW-3A	4	32	47	56	67	62	51	7	30	54	63	70	68	60		
D3FW-6A	3	22	38	47	66	56	43	3	25	47	54	70	63	50		
D3HB-6A	6	52	71	77	65	61	50	11	48	78	78	67	65	56		
D3HB-10A	3	45	64	74	67	61	51	6	30	71	81	65	63	56		
D3LB-20A	4	48	67	75	66	60	51	8	36	73	77	66	63	58		
D3MB-30A	3	26	46	49	52	57	42	7	32	53	55	57	56	54		

外形尺寸 Dimensions

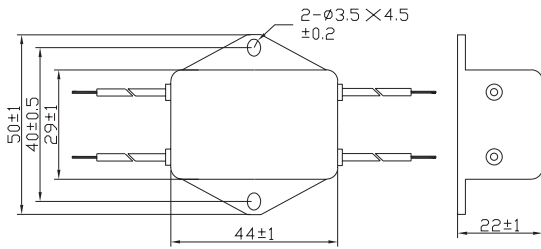


Fig1

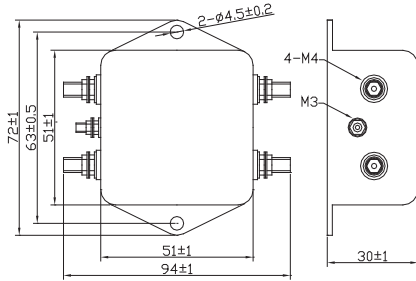


Fig2

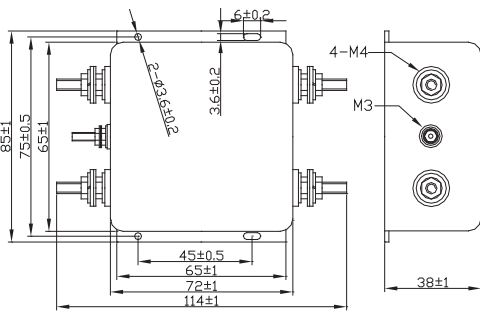


Fig3

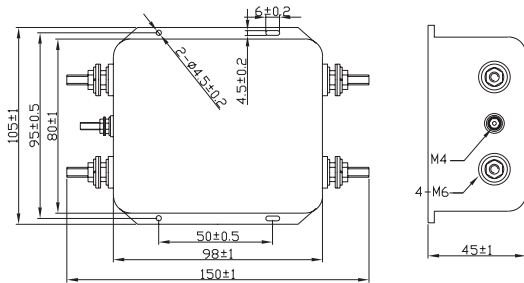


Fig4