

产品特点 Features

- ◇ 采用 π 型滤波电路, 具有优良的滤波性能;
 π type filter circuit, excellent performance.

应用范围 Applications

适用于直流电源(三线)供电的一般场合, 如: DC\DC电源模块、DC\AC逆变电源、测量仪表、车载设备等。

Applied in common DC power supply devices, such as DC\DC power module, DC\AC module, mobile units, test instruments and so on.



RoHS

技术参数 Specifications

型号 Model	端接方式 Terminals		额定电流 Rated Current	额定电压 Rated Voltage	工作频率 Frequency	测试电压 Test Voltage	最大漏电流 Leakage Current	气候类别 Climate	外形尺寸 Dimensions
D2FW-1A/3A/6A	!	!	1A/3A/6A	200VDC	DC	线-线 L-N 400VDC/1min 线-地 L-G 500VDC/1min	—	25/085/21	Fig1
D2HB-6A/10A	≡	≡	6A/10A						Fig2
D2KL-10A	⏏	⏏	10A						Fig3
D2KB-20A	≡	≡	20A						Fig4
D2LB-10A/20A	≡	≡	10A/20A						Fig5
D2MB-30A	≡	≡	30A						Fig6

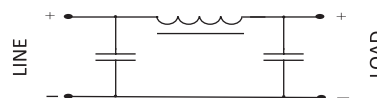
插入损耗 Insertion Loss

(按CISPR17在50/50 Ω 条件下测试)

(Measured in 50 Ω system, as CISPR 17)

型号 Model	DM 插入损耗 (dB)/频率MHz						
	.01	.15	.50	1.0	5.0	10	30
D2FW-1A	5	52	43	37	24	19	14
D2FW-3A	7	52	43	37	24	19	14
D2FW-6A	9	50	43	37	24	19	14
D2HB-6A	8	61	59	55	45	40	33
D2HB-10A	10	54	58	54	44	39	32
D2KL-10A	16	63	63	58	45	40	33
D2KB-20A	16	58	60	56	44	40	32
D2LB-10A	25	64	59	55	44	40	33
D2LB-20A	27	62	58	54	42	38	31
D2MB-30A	28	66	61	57	47	42	35

电路原理图 Circuit Schematics



外形尺寸 Dimensions

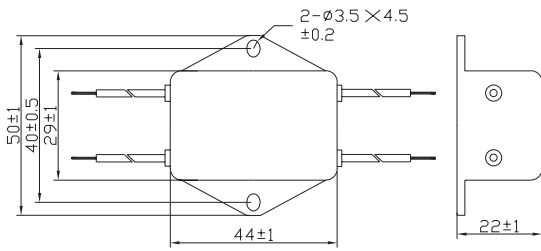


Fig1

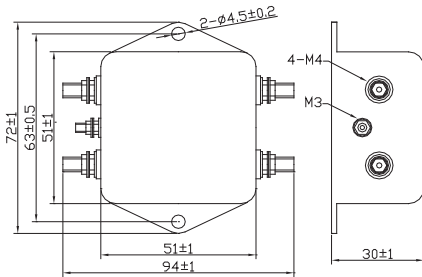


Fig2

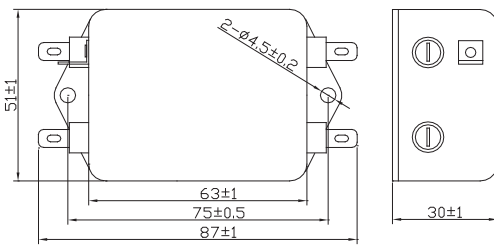


Fig3

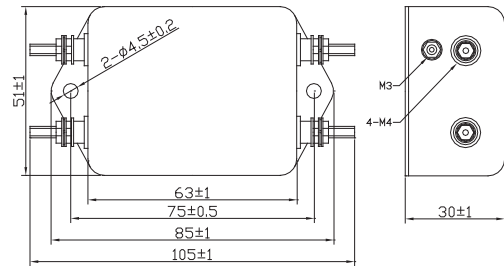


Fig4

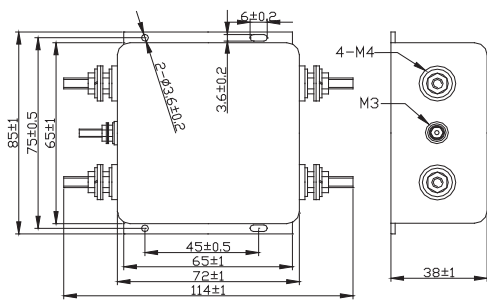


Fig5

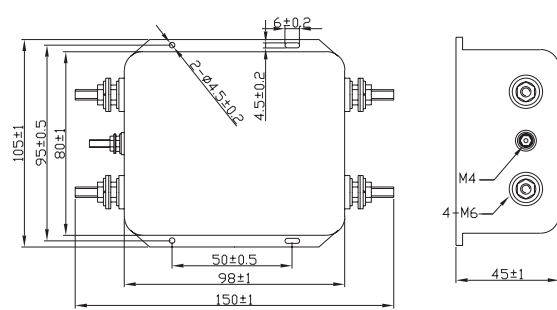


Fig6