

## 产品特点 Features

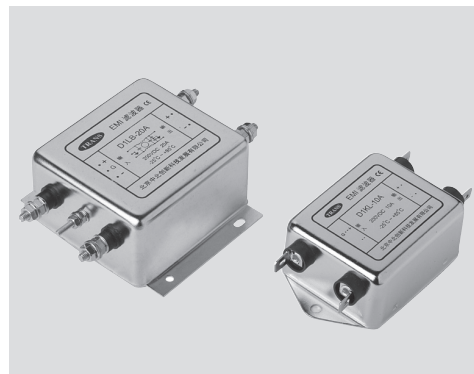
- ◇ 采用单级滤波电路, 兼顾对共/差模干扰的抑制, 具有优良滤波性能。

Steady performance in interference suppressing.

## 应用范围 Applications

适用于直流电源(三线)供电的一般场合, 如: DC\DC电源模块、DC\AC逆变电源、测量仪表、车载设备等。

Applied in common DC power supply devices, such as DC\DC power module、DC\AC module, mobile units, test instruments and so on.



RoHS

## 技术参数 Specifications

型号 Model	端接方式 Terminals	额定电流 Rated Current	额定电压 Rated Voltage	工作频率 Frequency	测试电压 Test Voltage	最大漏电流 Leakage Current	气候类别 Climate	外形尺寸 Dimensions
D1FW-1A/3A/6A	!	1A/3A/6A	200VDC	DC	线-线 L-N 400VDC/1min 线-地 L-G 500VDC/1min	—	25/085/21	Fig1
D1HB-6A/10A	≡ ≡	6A/10A						Fig2
D1KL-10A	⏏ ⏏	10A						Fig3
D1KB-20A	≡ ≡	20A						Fig4
D1LB-10A/20A	≡ ≡	10A/20A						Fig5
D1MB-30A	≡ ≡	30A						Fig6
D1NB-50A	≡ ≡	50A						Fig7
D1TB-100A	≡ ≡	100A						Fig8

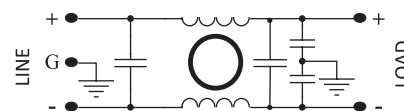
## 插入损耗 Insertion Loss

(按CISPR17在50/50Ω条件下测试)

(Measured in 50Ω system, as CISPR 17)

型号 Model	CM 共模 (dB)/频率MHz							DM 差模 (dB)/频率MHz						
	.01	.15	.50	1.0	5.0	10	30	.01	.15	.50	1.0	5.0	10	30
D1FW-1A	27	70	79	79	66	58	47	20	69	79	76	68	65	50
D1FW-3A	17	63	77	77	68	61	45	18	62	80	77	67	64	50
D1FW-6A	8	52	66	74	64	61	48	12	48	73	77	67	63	54
D1HB-6A	21	67	77	78	67	62	45	20	64	81	77	64	60	52
D1HB-10A	9	55	70	76	69	64	50	13	52	79	76	63	58	52
D1KL-10A	15	61	74	77	69	62	47	17	59	80	76	64	59	51
D1KB-20A	10	55	69	75	67	61	47	13	52	77	78	63	58	51
D1LB-10A	17	64	77	80	69	61	47	18	63	79	74	62	58	50
D1LB-20A	14	60	75	80	67	60	42	16	59	80	75	63	58	48
D1MB-30A	12	55	68	75	66	57	37	15	60	74	82	66	61	43
D1NB-50A	17	58	69	75	61	51	34	19	62	75	78	65	57	41
D1TB-100A	4	46	67	73	63	56	43	9	52	73	79	64	58	47

## 电路原理图 Circuit Schematics



外形尺寸 Dimensions

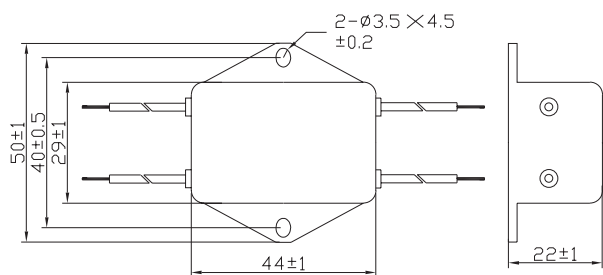


Fig1

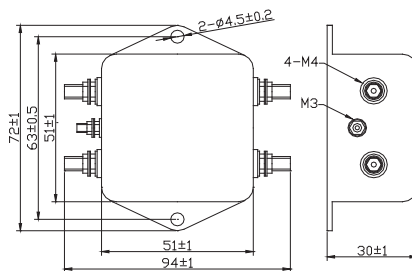


Fig2

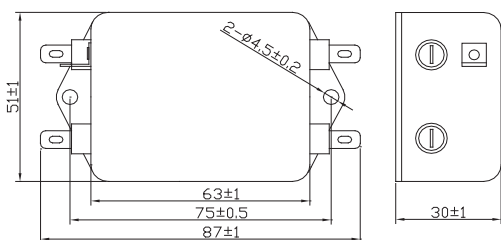


Fig3

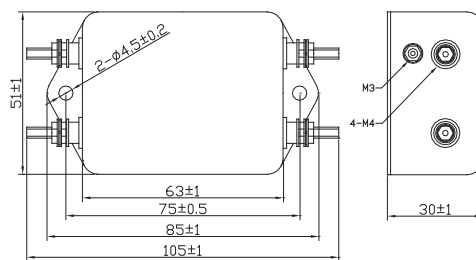


Fig4

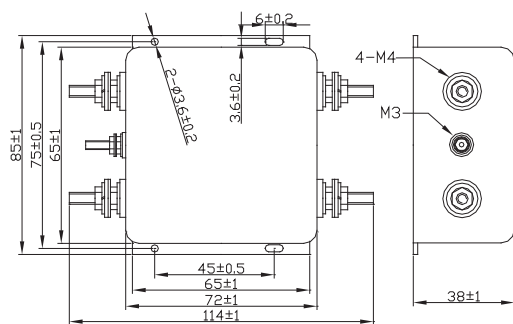


Fig5

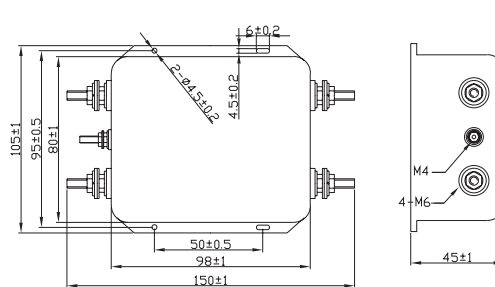


Fig6

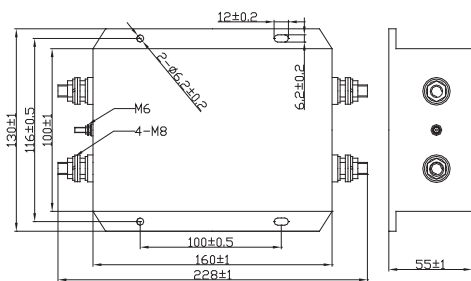


Fig7

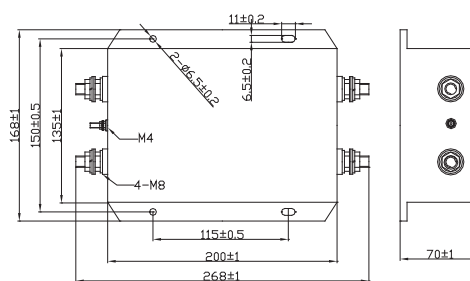


Fig8